



# Mertzbaher Trail

Trek dossier

ID	MZTR	Days/Km	14/60
Location	Central Tien Shan	Grade	Steady Extra
Max altitude	4000 m	Daily gain	500-800 m

Gotfried Mertzbaher was the first man to reach the upper grounds of Inylchek glacier in 1902 in hope to reach the highest point as he thought Khan Tengri peak would be. Today we offer 14 day trek along Mertzbaher trail to Khan Tengri and Pobeda peaks base camp. This trek is a good pre climb warm up for Khan Tengri and Pobeda peaks or just a step into a higher altitudes. Tough and challenging it suits sport groups and experienced walkers. Right in the heart of Central Tien Shan, in the remote east corner of Kyrgyzstan, we trek along Inylchek valley, home to biggest glacier of Kyrgyzstan and highest peaks in the region Khan Tengri 7010 m and Pobeda 4739 m. Drive thru abundant miner city on the way, touch waters of unique Mertzbaher lake and finally finish at the base camp in the foot hills of massive icy walls of Khan Tengri and Pobeda peaks where climbers all over the world would start their ambitious climbs. Trek starts in lower grounds of Inylchek valley. Here, porters take over and carry camping gear for the trek through stunning mountain scenery: cool juniper groves, many tempestuous rivers, high glaciated summits and a wide variety of colourful panoramas with breathtaking landscapes. The area is abounded with wild and bird life: mountain goats, Marco Polo sheep, deer, foxes, wolves, plenty of marmots etc. Several Golden Eagles have their home here along with other colourful bird and wild-life. The tour begins and ends with the opportunity to visit some of Kyrgyzstan's finest cultural and historical treasures. There will be time at the end of the trek for sightseeing and shopping in Karakol's and Bishkek's bazaars, and we will gather together for a banquet on the final night.



## Grade

The tour is eight days trekking on foot. Paths are generally in good condition. On the glacier there will be no trail so the guides will make a direction for you. There are no mountain passes to cross on this trek - we gradually gain the height along the same valley. The trek is porter-assisted, so you need to carry only a day pack with some of your belongings. Your portage must not exceed 10 kg per person. Average walking time is around 7-8 hours per day. Daily altitude gain is about 500-800 m. You must be reasonably fit to attempt this trek. Trekking/hiking and camping background advisable but not essential.

## Trek Crew

The trek is assisted by guide and porters who carry food and camping gear for the trek.



1 Day

Bishkek - Karakol

Arrive Bishkek in the morning. Meet agent and van. Drive to Karakol town based on the eastern end of Issyk Kul lake – the second largest alpine lake in the world after lake Titicaca in South America. Short sightseeing around the town visiting the most interesting sights: Russian Orthodox Holy Trinity cathedral built in 1856 without a single nail and Dungan mosque built in a shape of Chinese pagoda. Meals: BLD. Overnight in hotel. Distance: 400km. Vertical: +1000

2 Day

Karakol - At Jailoo

After breakfast we meet ex army truck to drive 180 km by exciting mountain road winding through the forests and between rocks along rushing waters of mountain rivers. Meal: BLD. Overnight in tents. Distance: 200km. Vertical: +800.

3 Day

At Jailoo - Iva camp

Full day trek along Inylchek river bed. We cross several side rivers today, but generally we hike along flat sections with minor steep hikes towards Inylchek glacier. Camp at Iva, right in front of the glacier tongue. Meals: BLD. Overnight in tents. Distance: 18km. Vertical: +400



4 Day

Iva camp - Glina camp

We step on the glacier today to cross it towards its right bank and continue along the side moraine. Glacier is covered by rocks and quite hilly in some sections. Trail does not exist here, so we find the best way towards side moraine. Meals: BLD. Overnight in tents. Distance: 8km. Vertical:+200



5 Day

Glina camp - Mertzbaheer glade

Half day trek to Merzbacher glade – the green meadow across Merzbacher lake. On a glade there is a research station built in recent years to observe the glacier flow and Merzbacher lake. Free time for rest. Meals: BLD. Overnight in tents or cabin. Distance: 8km. Vertical: +200



6 Day

Mertzbaheer lake

Approach Mertzbaheer lake by traversing rough glacier terrain and finding our way thru the system of crevasses. Discovered in 1903 by Gottfreid Merzbacher - german geographist and mountaineer, the lake still keeps the secret of its drainage cycles, twice a year its waters burst the ice and drain into Inylchek river making the whole valley impassible for several days. Meals: BLD. Overnight in tents or cabin. Distance: 9km. Vertical:+300



7 Day

Merzbacher glade - Komsomolets glacier

Today we trek along the glacier finding our way between its labyrinths. Glacier is mainly flat and safe to go without crampons. We are now 1 day trek from BC so we try to move as far as possible. Camp at Komsomolets glacier. Meals: BLD. Overnight in tents. Distance: 12km. Vertical:+400





8 Day

Komsomolets glacier - Dikiy glacier

Half day trek along the glacier towards Pesni Abaya peak. Once we approach we see stunning Khan Tengri peak on the left and mighty Pobeda peak on the right. At night the clear view of milky way is unparalleled. Meals: BLD. Overnight in tents. Distance: 7km. Vertical: +100



9 Day

Dikiy glacier - South Inylchek BC

Final leg to South Inylchek base camp. Optional climb of Abaya peak in the first half of the day (subj for extra charge of 55 USD/person). Half day trek to BC. Sauna and Vodka in the evening. Meals: BLD. Overnight in BC tents on twin share basis. Distance: 8km. Vertical: +200



10 Day

South Inylchek BC

Free day for rest in base camp or optional hike to the foothills of Khan Tengri peak. Both Khan Tengri and impressive wall of Pobeda peak are clearly seen from the base camp, so if your personal battery is now drained after a long trek - stay in camp and have time for yourself. You did a great job already. Meals: BLD. Overnight in tents.



11 Day

South Inylchek BC - Karkara - Issyk Kul lake

Meet helicopter in the morning. Fly thru (not over) the mountains to Karkara helipad. Meet comfortable aircon vehicle. Drive to the shore of Issyk-Kul lake - the second largest alpine lake in the world. Accommodation in guest house or hotel on the shore. Free time for swimming or rest. Meals: BLD. Overnight in guest house. Distance: 200 km. Vertical: -2500



**Fixed Departures 2017:**

13-26/07

10-23/08

**2,230 USD**

12 Day

Issyk Kul lake - Bishkek

Drive to Bishkek (240 km) - the capital city of Kyrgyzstan. Visit 11cc Burana tower museum on the way and have a lunch with local family who leaves near by. Free time before dinner. Meals: BLD. Overnight in hotel. Distance: 250km. Vertical: -800

13 Day

Bishkek

Full day tour of Bishkek: see its the most interesting museums and statues, Ala Too square, Osh bazaar, Russian orthodox church, Victory square with internal flame. PM free time for extra shopping or rest in hotel. Meals: BLD. Overnight in hotel.

14 Day

Bishkek - Airport

Transfer to airport for onward flight to your home or next destination. Meals: B.

*Price per person 2017/Individual departures*

Price per person	1 pax	2 pax	3 pax	4 pax	5 pax	6 pax	7 pax	8 pax	9 pax	10 pax
Price in USD	4,315	2,930	2,550	2,240	2,150	2,000	1,950	1,890	1,850	1,825

**ALL PRICES ARE SUBJECT TO CHANGE UNLESS CONFIRMED BY ACTUAL RESERVATION**

**Tour price includes:**

- 4 Season tents	- Porters/Cook/Guide services
- Full board whilst on trek	- National and state park fees
- Border zone permit	- Hotel accommodation (**/***)
- Kitchenware+camping gas	- All relevant transportation incl heli transfer

\*Price is based on double occupancy in hotels and tents.

**THERE ARE NO OTHER HIDDEN FEES**



## Tour price **does not** include:

- Excess baggage costs	- Tips for guides/porters/drivers
- Air fare to Kyrgyzstan	- Certain meal whilst not on trek or tour
- Single accommodations	- All personal expenses, equipment, clothing
- Travel insurance + Medevac charges	- Visa and passport cost

Kyrgyzstan visa regulations: [http://www.trekking.kg/travel/visa\\_and\\_formalities/](http://www.trekking.kg/travel/visa_and_formalities/)

## Guests are required to have:

- Sense of Adventure	- Medical and Accident insurance
- Reasonable fitness	- Porterage weight limit 10 kg/person
- Personal travelers' first aid kit	- All appropriate clothing and equipment

## Options

You might like an idea to upgrade your accommodation in Bishkek and Karakol for a supplementary fee as well as if you travel in a group and do not want to share the room or tent with another person, a small fee will be collected for single supplement. Also you might want to see all around Bishkek and build-in a few days in the itinerary or even link this trek with other activities in Central Asia. We are able to customise any of our tours.

## Weather and average temperatures

Kyrgyzstan has acutely continental climate with cold winters and hot summers. It averages 247 sunny days a year. Situated in a mountainous region Kyrgyzstan has all year round snows in the high lands. The one can expect sub-zero temperatures while in the mountains at any time. Summer time the mornings are generally fine and the afternoons sometimes hazy with occasional rain. Mountain passes over 3500 meters above sea level may have all the year round snow fields on the northern slopes.

At the lower altitudes by tree line or a little above, the temperature ranges between -4°/-6°C (21-24°F) in January to 16-24°C (61-75°F) in July. In the highlands, the temperatures range from -14°/-20°C (6.8°/-4°F) in January to 8-12°C (46-54°F) in July. There are occasional snowfalls during the summer above 3000 metres and winter. The best period for trekking in Tien Shan and Pamir mountains is thru July to October.

## Annual temperatures

JAN	FEB	MAR	APR	MAY	JUN	JUL	AUG	SEP	OCT	NOV	DEC
-7C/ 19.4F	-6.5 C/ 21.2F	0.5 C/ 32.9F	6.5 C/ 43.7F	11.5 C/ 52.7F	14 C/ 57.2F	16.5 C/ 61.7 F	15.5 C/ 59.9F	12 C/ 53.6F	6 C/ 42.8F	0.5 C/ 32.9F	-4,5 C/ 32.9F



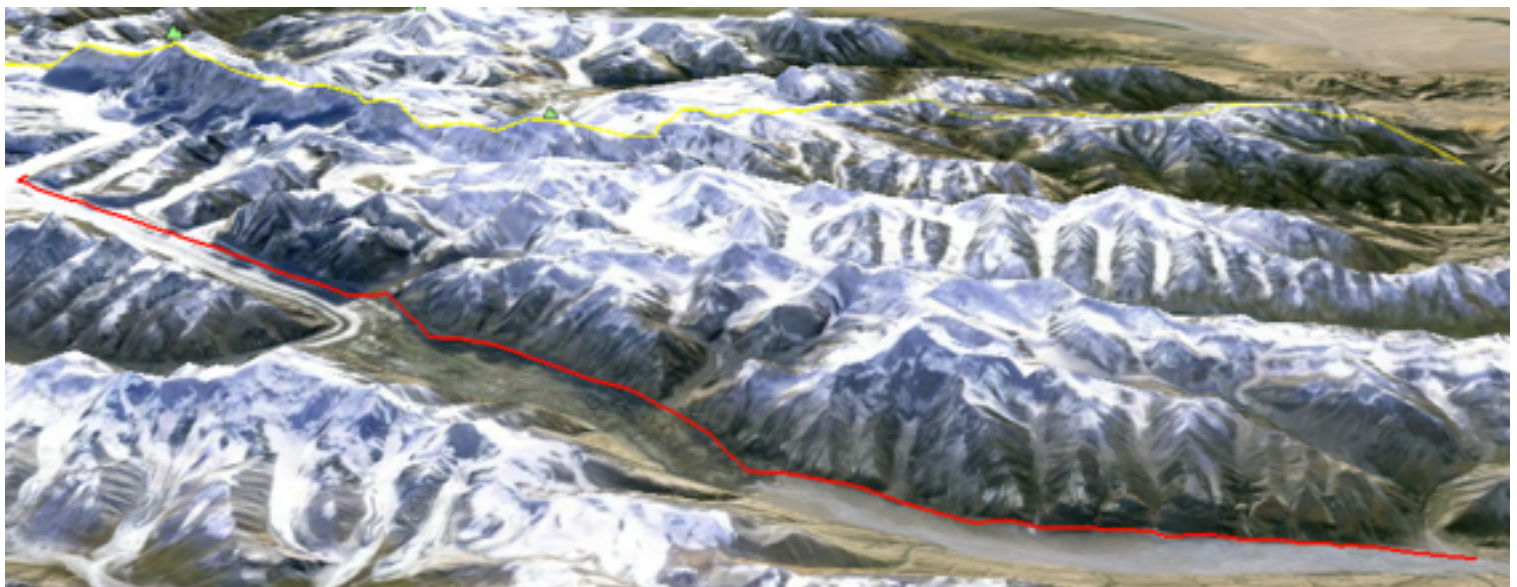
## Elevation profile



## Trekking area on the map of Kyrgyzstan



## 3D Google Earth visualisation







For more detailed information  
tours&prices etc

If you are interested in this tour and/or would like to combine this tour with other activities in Kyrgyzstan, or build-in this section in a longer tour of Central Asia please do not hesitate to contact us at [info@fantasticasiatravel.com](mailto:info@fantasticasiatravel.com) for details. We will be happy to answer all your questions and send you most updated prices. Please mention ID of this tour: **MZTR**

#### CONTACT DETAILS

Call us: +996 555 303025

Skype: Fantastic-Asia

WEB: [www.trekking.kg](http://www.trekking.kg)

Email: [info@fantasticasiatravel.com](mailto:info@fantasticasiatravel.com)

**Alternatively write to us: Fantastic Asia Ltd. 8 Ogorodnyi pereulok. Bishkek. 720014.  
Kyrgyzstan**

The Fantastic Asia family of web sites:

Backcountry Ski in Kyrgyzstan: <http://www.backcountryskikyrgyzstan.com>

Heli Ski In Kyrgyzstan: <http://www.heli-ski.kg>

Travel Tajikistan: <http://www.traveltajikistan.net>

Fantastic Asia: <http://www.FantasticAsiaTravel.com>